

Glass Tong Head Gripper

- Ideal for hot glass bottle transferring applications
- Rugged design and long life
- Easily field repairable
- Precise jaw movement improving accuracy and reducing cracks on glass containers

DESIGNED
FOR THE
GLASS
CONTAINER
INDUSTRY



GLASS TONG HEAD GRIPPERS

Major Benefits

The design of the new GGA Glass Gripper incorporates a cam slot that provides a locking ramp which locks in place when jaws are fully open. In addition, it has a cushioning through the cam slot design which also provides a very smooth closing.

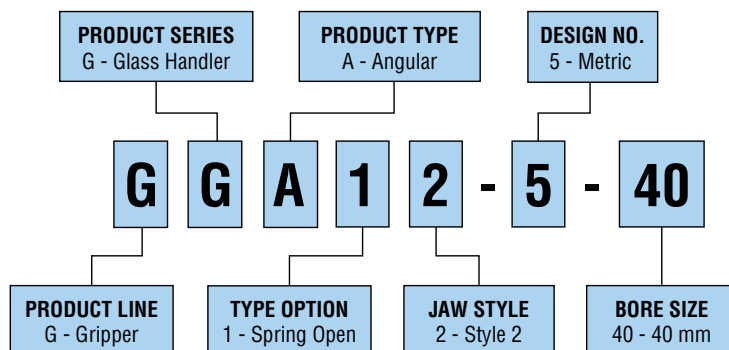
- **Mechanical Locking:** Gripper jaws are locked on full open, thus eliminating jaws and tooling being exposed to additional moments of inertia during gob/bottle transfer onto the conveyor. This is called Anti-Wink Function which reduces the risk of damaging the container mouth rim.
- **More Grip Force:** The theoretical grip force with the jaws at parallel is about 347 N at 6 bar [78 lb at 87 psi] and 85 N at 2 bar [19 lb at 29 psi].
- **Cam Slot Design:** Provides for precise jaw closing and opening, minimizing damage to the bottle necks. For consistent, repeatable pick up. No pin breaks or jaw play!
- **Drop-in Replacement:** On popular glass bottle forming machines
- **Engineered Solution:** Designed for more than 10 million cycles
- **Less Downtime:** Easily field repairable, less parts, spare parts available upon request (maintenance interval varies based on local environment)



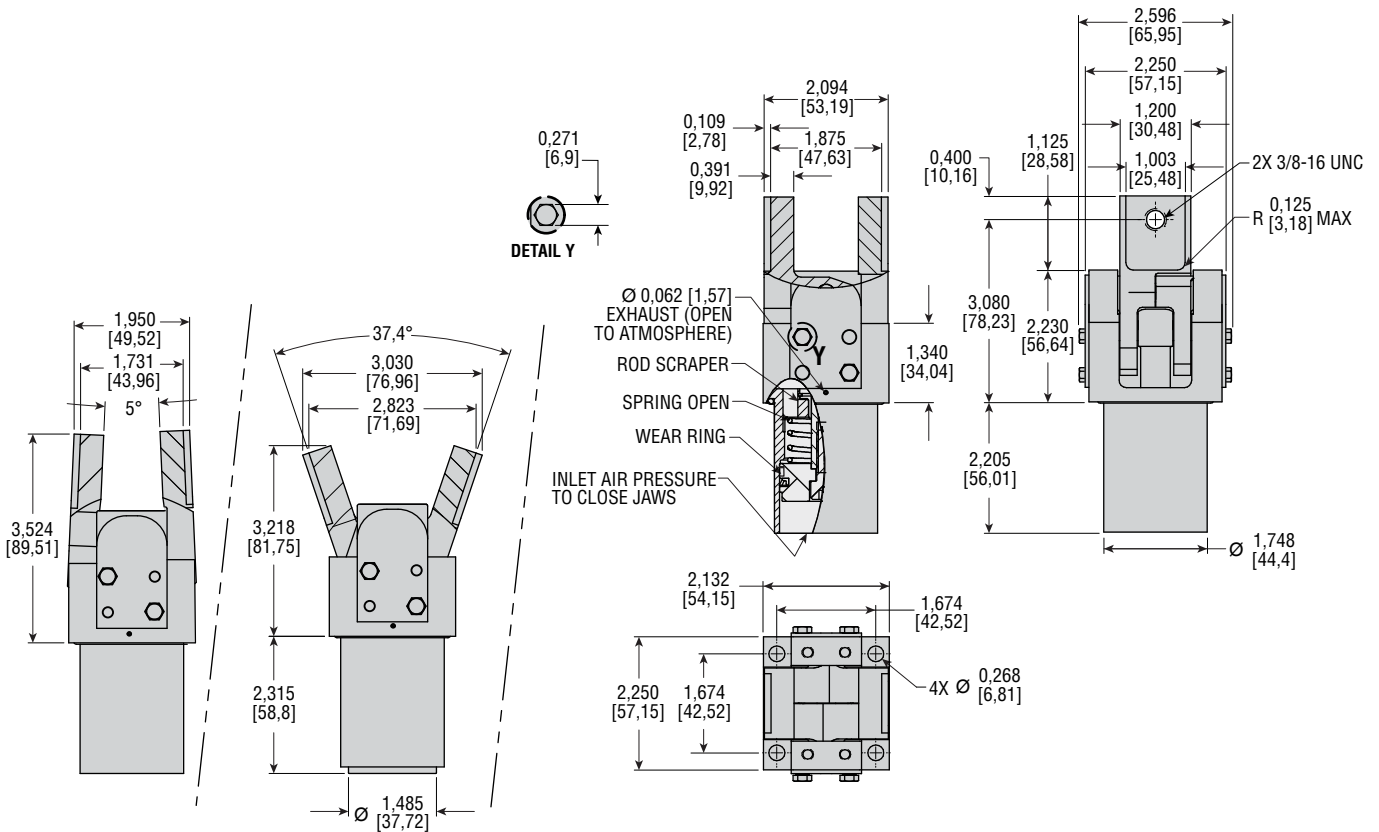
GGA12-5-40



SPECIFICATIONS	GGA12-5-40
WEIGHT	30,4 oz [862 g]
BORE	40 mm
JAWS OPEN ANGLE	37,4°
JAWS FULL CLOSE ANGLE	-5°
OPERATING PRESSURE	2 to 6 bar
JAW MATERIAL	Pre-hardened steel
BODY	Coated
SPRING OPEN	Spring installed between body and piston
ROD SCRAPER	High-temp (standard)



GGA12-5-40

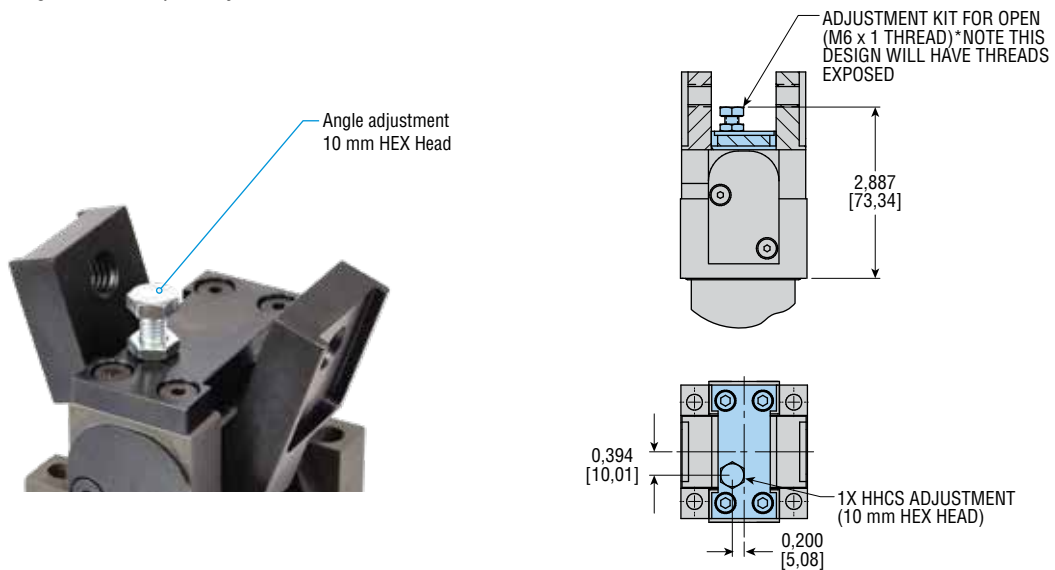


NOTES:

- 1) ALL DIMENSIONS ARE SHOWN IN in [mm] AND ARE FOR REFERENCE ONLY
- 2) THEORETICAL GRIP FORCE AT 30 psi [2 bar] IS ABOUT 18 lb [80 N] AT THREADED HOLES AT PARALLEL JAW POSITION
- 3) SINGLE-ACTING OPERATION: - SPRING OPEN, AIR PRESSURE CLOSED
- 4) UNIT RATED FOR 400°F [204°C]

ANGLE ADJUSTMENT KIT# 315208-10

Jaw Angle Adjustment Kit provides an easy possibility to adjust the jaw opening. Ordered separately and easily installed.

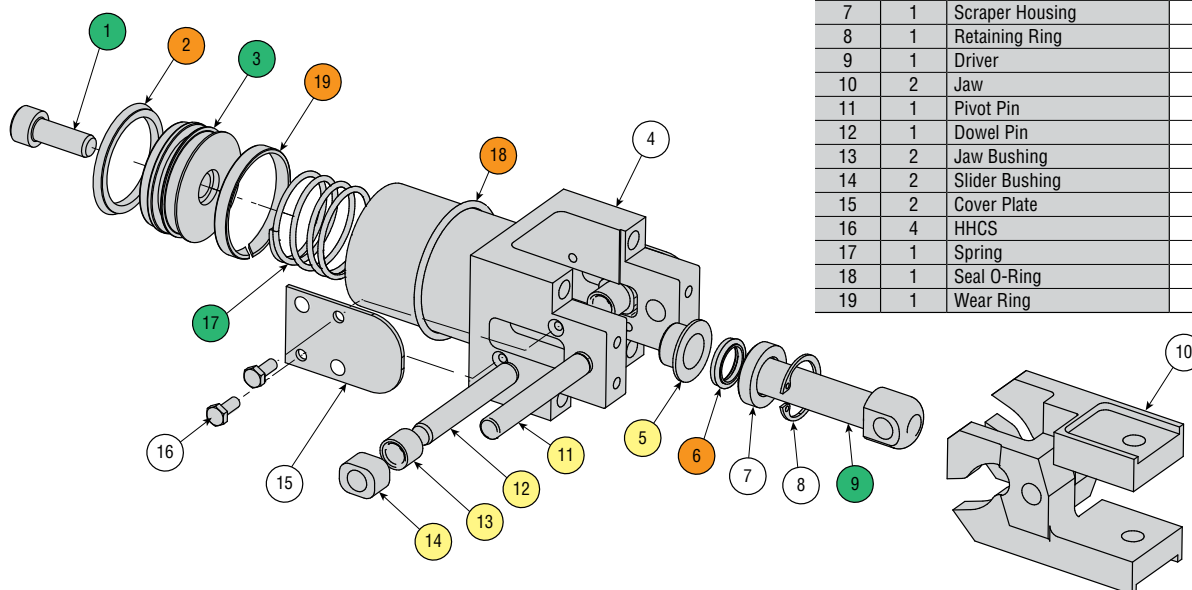


EXPLODED ASSEMBLY PARTS: Series GGA

KIT DESCRIPTION	KIT NUMBER	COLOR CODE*
Seal Kit	Full unit description and -H9000	
P&R Kit	316532-52	
Bushing Kit	316532-51	

* Color code designates parts to be included in kit

KEY	QTY	PART DESCRIPTION	PART NUMBER
1	1	SHCS	14308-140
2	2	Piston Seal	63624-012-2
3	1	Piston	316532-01
4	1	Body	90930
5	1	Bearing	86603-020
6	1	Wiper Seal	89375-005-02
7	1	Scraper Housing	90936
8	1	Retaining Ring	1987-028
9	1	Driver	90932
10	2	Jaw	90931
11	1	Pivot Pin	62176-04
12	1	Dowel Pin	52416-111
13	2	Jaw Bushing	62098
14	2	Slider Bushing	62100
15	2	Cover Plate	90933
16	4	HHCS	16281-014
17	1	Spring	90934
18	1	Seal O-Ring	68687-219-2
19	1	Wear Ring	316532-02



Gripper Housing - 3 Bottle Transfer Kit#VAS-286651

Gripper housing shown for reference only. Other replacement OEM sizes are available upon request.

- Replacement housings for all types of OEM machines can be designed to allow the use of Series GGA Glass Tong Head Gripper
- Reduced weight of holder decreases stress on take-out mechanism
- Machined gripper housings provide better quality than casted OEM units
- Possibility to replace OEM glass grippers by Series GGA Glass Tong Head Gripper

